

Moxie U

Claude Monet is perhaps the most famous and influential of the impressionist painters, or any painter.

His images are ubiquitous and much heralded in our western culture.

The impressionists were a revolutionary movement of artists who rebelled against the standard art philosophies and techniques of the later 19th century. They strove to paint and depict the world more from a personal response to nature, not as literal and academic as painting was practiced at that time. Impressionists like to paint outside, getting an immediate reaction to the actual light of the scene. To paint as “reflexively” and intuitively as possible.

His career is easily divided into multiple time periods:

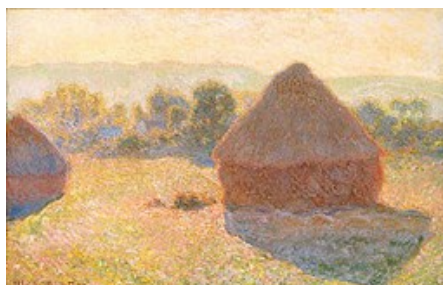
His early paintings were tight and vivid. (1858 – 1871)



His middle period was the beginning of the Impressionist movement. (1872-1879)



In the last period (1880 – 1926) of his career he embarked on a series of objects in nature that showed how they changed over a day. Here are haystacks in the morning, midday and in the evening. His brushstrokes continued to loosen up, his colors became more diffuse and reflected the light of their environment.



Although Claude Monet was famous for his oil paintings, he also used pastels like the ones you used in this lesson.